

# ONDAS

Ron Gidrón

Tempo ♩ = 80

voice

acompañamiento

Musical notation for voice and accompaniment, measures 1-5. The voice part is in treble clef with a common time signature (C). The accompaniment is in treble clef with a common time signature (C). The voice part starts with a whole rest in measure 1, followed by eighth-note patterns in measures 2-5. The accompaniment features a steady eighth-note accompaniment in the first three measures, followed by chords in the last two measures.

6

Musical notation for voice and accompaniment, measures 6-10. The voice part continues with eighth-note patterns. The accompaniment features chords in measures 6-10, with a fermata over the final chord in measure 10.

11

Musical notation for voice and accompaniment, measures 11-16. The voice part continues with eighth-note patterns. The accompaniment features chords in measures 11-16, with a fermata over the final chord in measure 16.

17

Musical notation for voice and accompaniment, measures 17-21. The voice part continues with eighth-note patterns. The accompaniment features chords in measures 17-21, with a fermata over the final chord in measure 21.

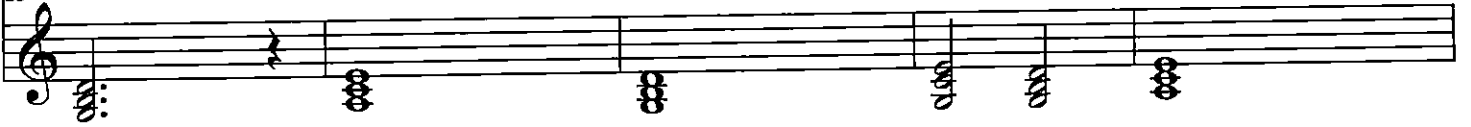
ONDAS

2

23



23



28



28



33



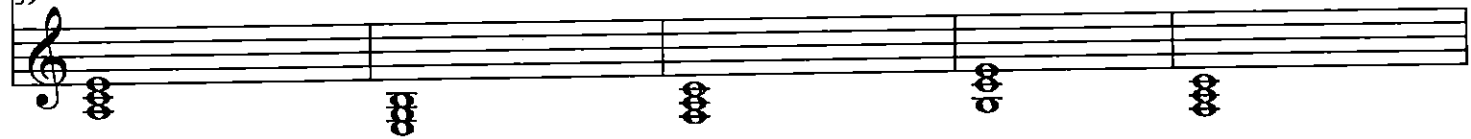
33



39



39



44



44



ONDAS

49

49

The image shows two staves of music. The top staff is in treble clef and contains a melodic line starting with a quarter rest, followed by eighth notes G4, A4, B4, A4, G4, F4, E4, and a final quarter note D4. The bottom staff is in treble clef and contains a bass line starting with a whole note chord of G2, B2, and D3, followed by a whole rest, and ending with another whole note chord of G2, B2, and D3. A long slur connects the two chords in the bottom staff.

42